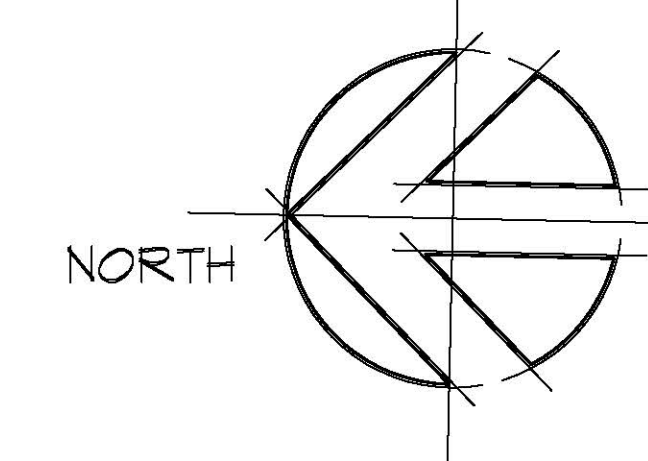




- LEGEND :**
- RESIDENTIAL
  - OFFICES
  - BALCONY
  - COMMON SPACE
  - LOBBY
  - CHILDCARE
  - PLAYGROUND
  - SERVICE AREA
  - PLANTER / LANDSCAPE
  - PARKING
  - BICYCLE PARKING / STORAGE

**SITE & ROOF PLAN**  
 3/32" = 1'-0"

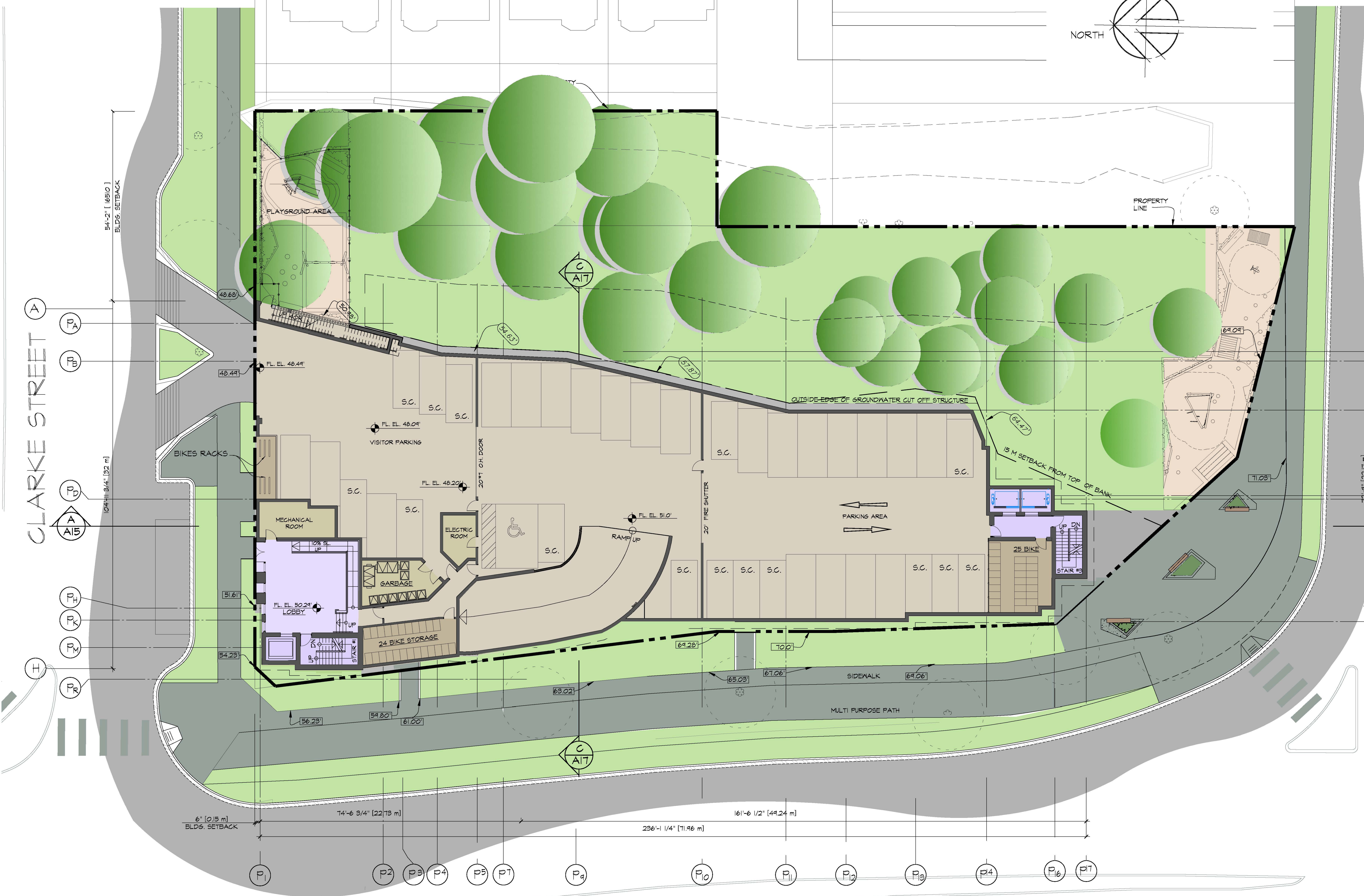


- LEGEND :**
- RESIDENTIAL
  - OFFICES
  - BALCONY
  - COMMON SPACE
  - LOBBY
  - CHILDCARE
  - PLAYGROUND
  - SERVICE AREA
  - PLANTER / LANDSCAPE
  - PARKING
  - BICYCLE PARKING / STORAGE
  - FINISH GRADES
  - GRADES FROM CIVIL

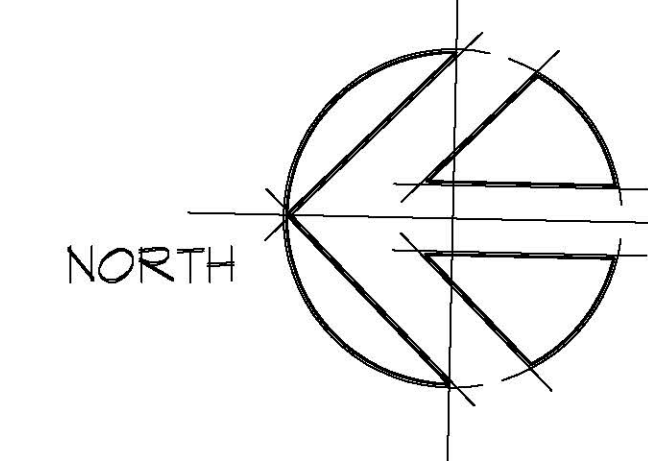
CLARKE STREET

ST. JOHN STREET

BARNET HIGHWAY



**PARKING LEVEL 2 PLAN**  
3/32" = 1'-0"

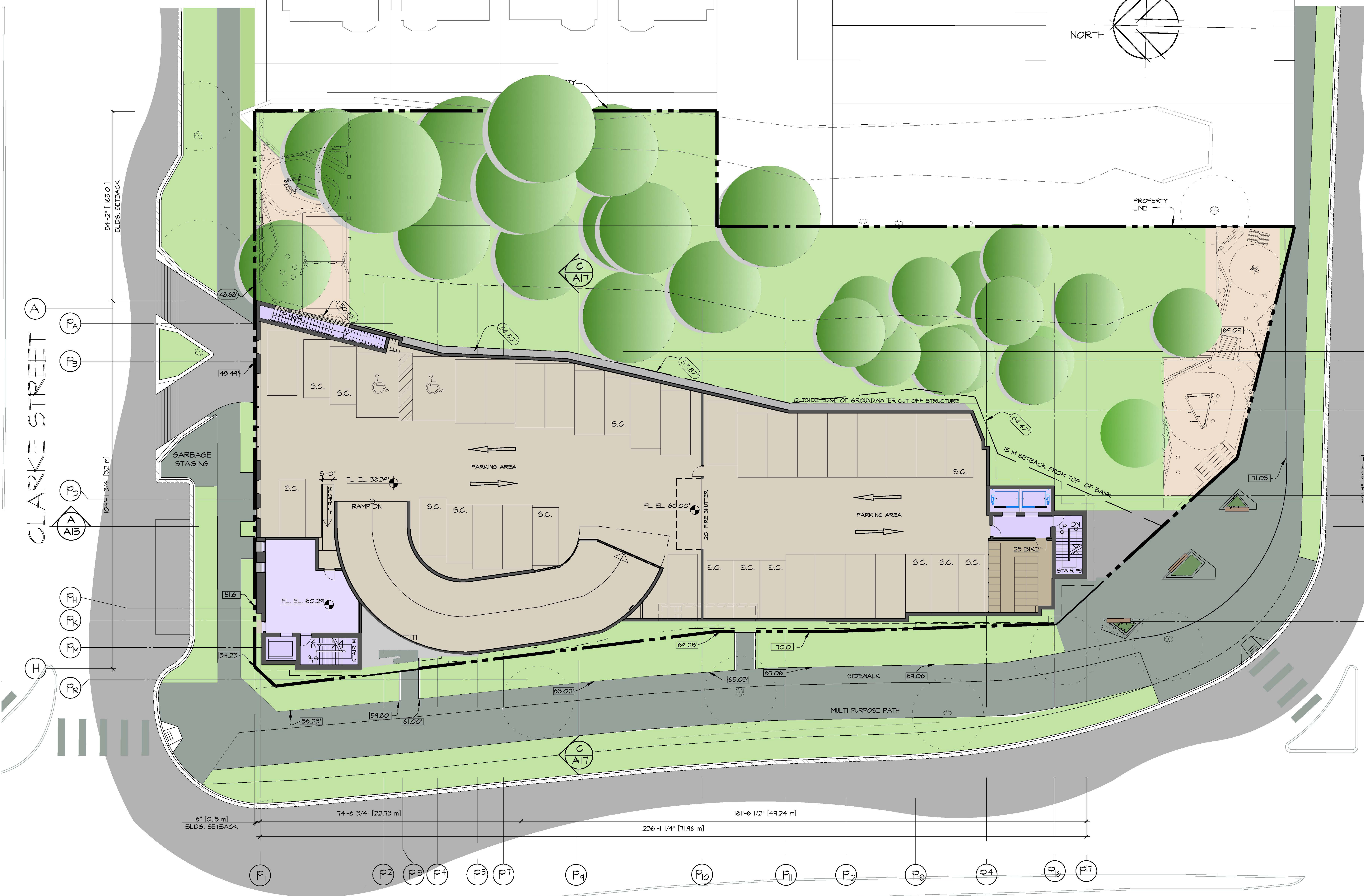


- LEGEND :**
- RESIDENTIAL
  - OFFICES
  - BALCONY
  - COMMON SPACE
  - LOBBY
  - CHILDCARE
  - PLAYGROUND
  - SERVICE AREA
  - PLANTER / LANDSCAPE
  - PARKING
  - BICYCLE PARKING / STORAGE
  - FINISH GRADES
  - GRADES FROM CIVIL

CLARKE STREET

ST. JOHN STREET

BARNET HIGHWAY



**PARKING LEVEL I PLAN**  
3/32" = 1'-0"





- LEGEND :**
- RESIDENTIAL
  - OFFICES
  - BALCONY
  - COMMON SPACE
  - LOBBY
  - CHILDCARE
  - PLAYGROUND
  - SERVICE AREA
  - PLANTER / LANDSCAPE
  - PARKING
  - BICYCLE PARKING / STORAGE

**SECOND FLOOR PLAN**  
 3/32" = 1'-0"



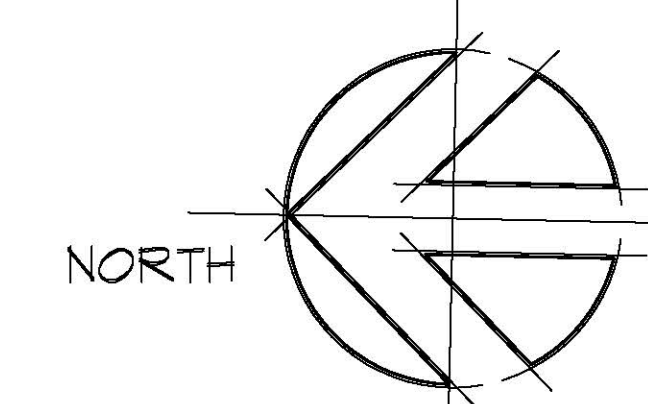
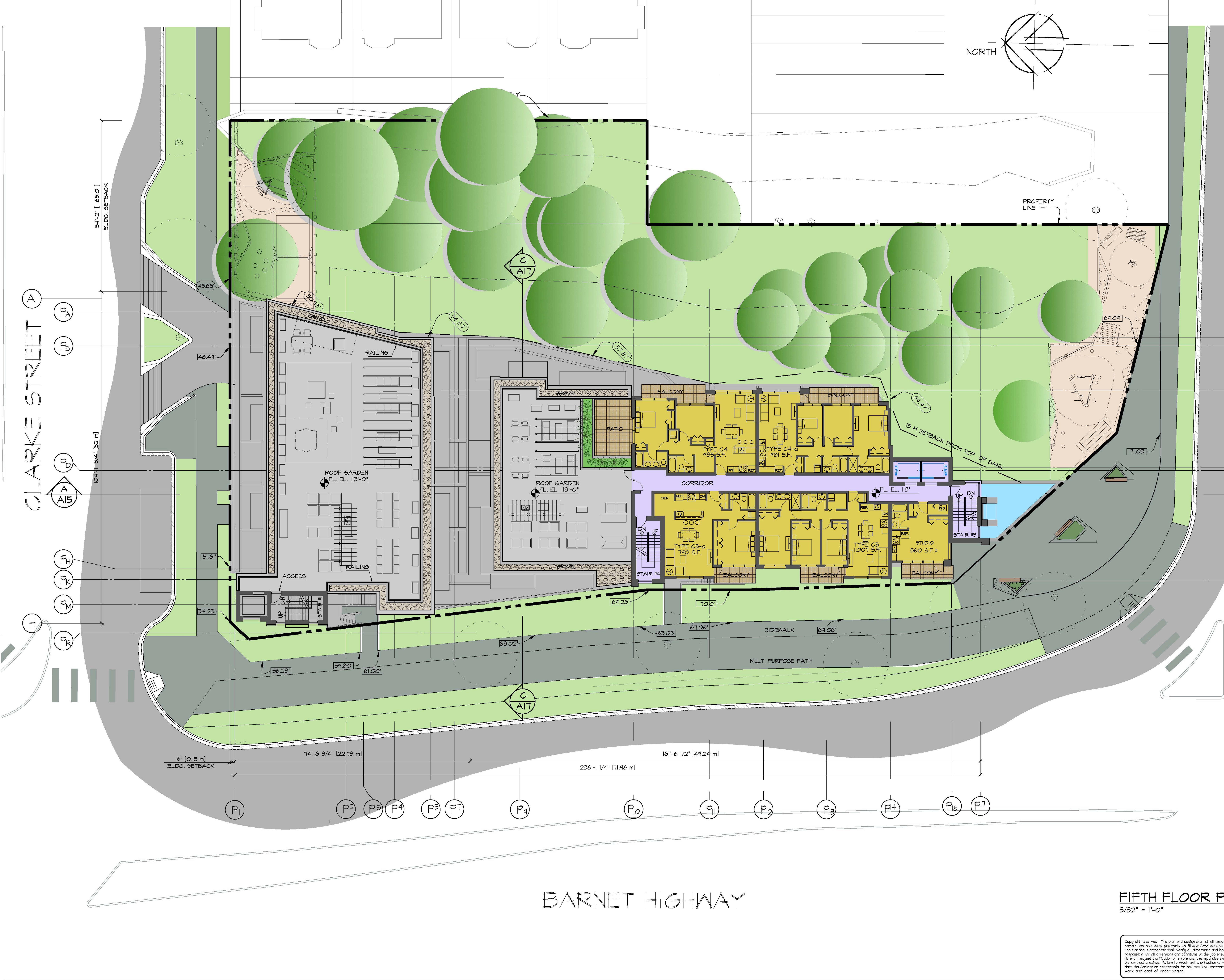
- LEGEND :**
- RESIDENTIAL
  - OFFICES
  - BALCONY
  - COMMON SPACE
  - LOBBY
  - CHILDCARE
  - PLAYGROUND
  - SERVICE AREA
  - PLANTER / LANDSCAPE
  - PARKING
  - BICYCLE PARKING / STORAGE

**THIRD FLOOR PLAN**  
 3/32" = 1'-0"



- LEGEND :**
- RESIDENTIAL
  - OFFICES
  - BALCONY
  - COMMON SPACE
  - LOBBY
  - CHILDCARE
  - PLAYGROUND
  - SERVICE AREA
  - PLANTER / LANDSCAPE
  - PARKING
  - BICYCLE PARKING / STORAGE

**FOURTH FLOOR PLAN**  
 3/32" = 1'-0"



- LEGEND :**
- RESIDENTIAL
  - OFFICES
  - BALCONY
  - COMMON SPACE
  - LOBBY
  - CHILDCARE
  - PLAYGROUND
  - SERVICE AREA
  - PLANTER / LANDSCAPE
  - PARKING
  - BICYCLE PARKING / STORAGE

CLARKE STREET

ST. JOHN STREET

BARNET HIGHWAY

**FIFTH FLOOR PLAN**  
3/32" = 1'-0"

Copyright reserved. This plan and design shall at all times remain the exclusive property of Lo Studio Architecture. The General Contractor shall verify all dimensions and be responsible for all dimensions and conditions on the job site. He shall request clarification of errors and discrepancies on the spot/advance. Failure to obtain such clarification renders the Contractor responsible for any resulting improper work and cost of rectification.

**LO STUDIO**  
architecture Inc.  
#205 - 3751 JACOMBS ROAD - RICHMOND, B.C.  
V6V 2K4 - TEL. 604-278-0114 - CELL 778-886-0284

